

Data Sheet

LL01ZZ-AHA05L06-M2



■ Features& Typical Applications

- High efficiency
- Available with 1 beam angle
- Optimized Uniformity
- Lens with Holder
- Architectural Lighting
- Spotlight

■ Table of Contents

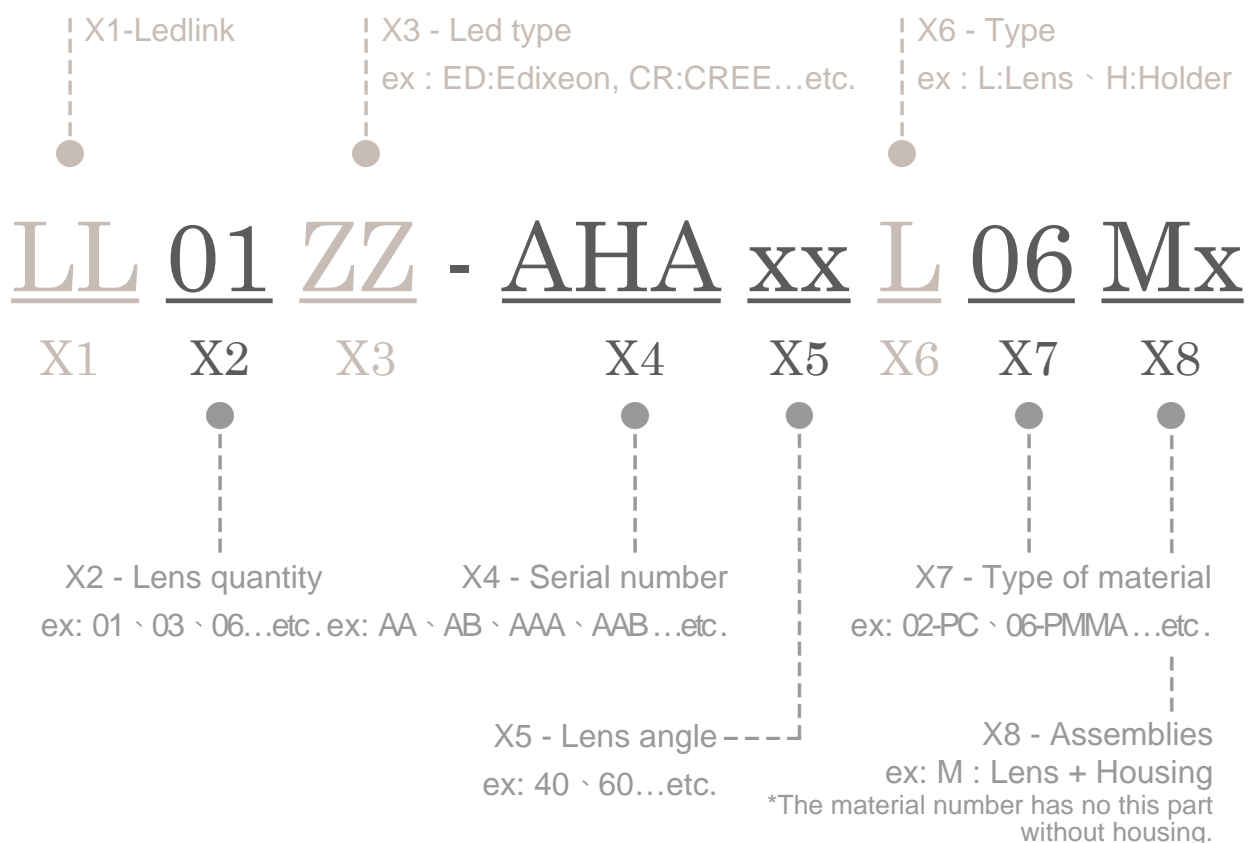
General Information & Product Nomenclature.....	P.2
Optical Specifications	P.3
Mechanical Specifications	P.4
Package Specifications	P.5

LL01ZZ-AHA05L06-M2

General Information

- Lens Material : PMMA 8N
- Holder Material : PC URC2500
- Operating Temperature range -40°C~+70°C(upper limit +80°C)
- Storage Temperature range -40°C~+70°C(upper limit +80°C)
 - * Average transmittance in visible spectrum 400nm~700nm>90%
- Usage and Maintenance:
 1. If necessary, clean lenses with mild soap, water and soft cloth.
 2. Never use any commercial cleaning solvents on lenses, like alcohol.
 3. Please handle or install lenses with wearing gloves, skin oils may damage lens or its optical characteristic.

Product Nomenclature

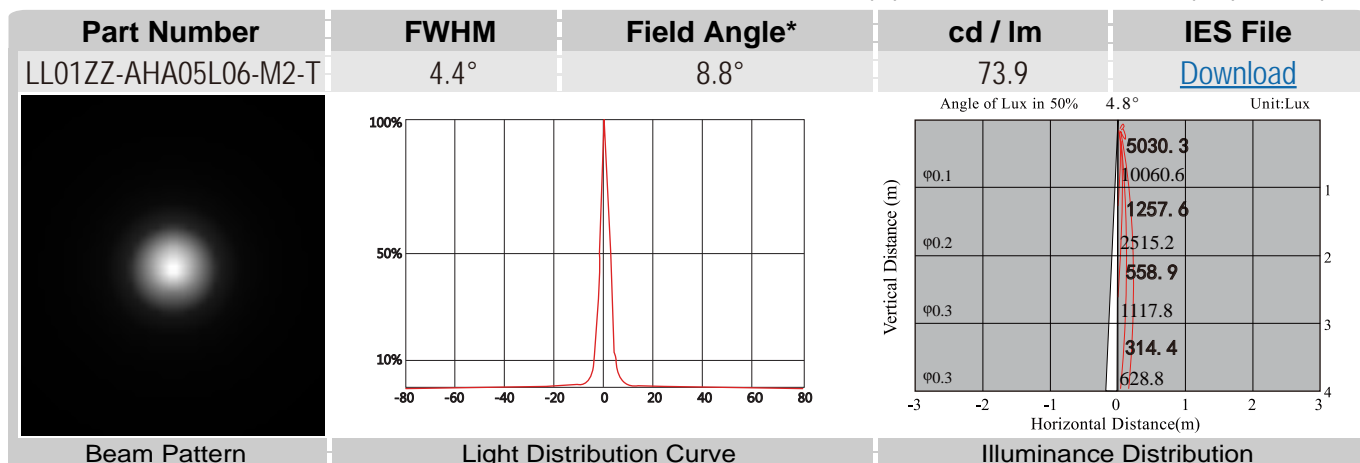


LL01ZZ-AHA05L06-M2

Optical Specifications



Note: (1) All the results of analysis are based on 0 degrees of elevation.
(2) Tolerance: $\pm 10\%$.
(3) Led Luminous Flux(lm): 136($\pm 5\%$).



*The Field Angle is the angle between the two directions opposed to each other over the beam axis for which the luminous intensity is 10% that of the maximum luminous intensity.
*This testing result is obtained through testing the popular rank LED samples which provided by the original manufacturer. Hence, the testing results would be varied as the users choose same LED model but different rank.

LL01ZZ-AHA05L06-M2

1. Fixing method

☐ Glue

☐ Screw

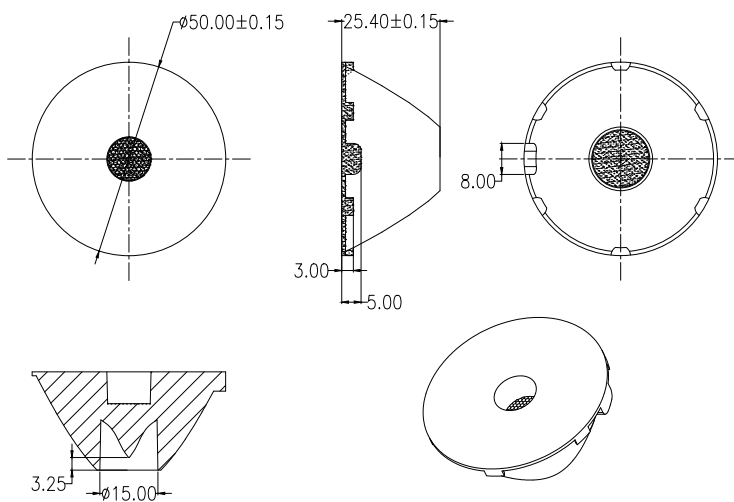
☐ Tape

☐ Fixing-ring

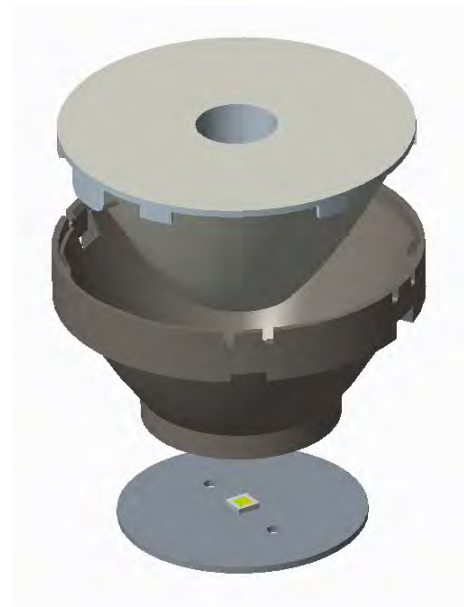
☒ Frame

Note: (1) All dimensions are in mm.
 (2) All measurements are ± 0.15 mm unless otherwise indicated.

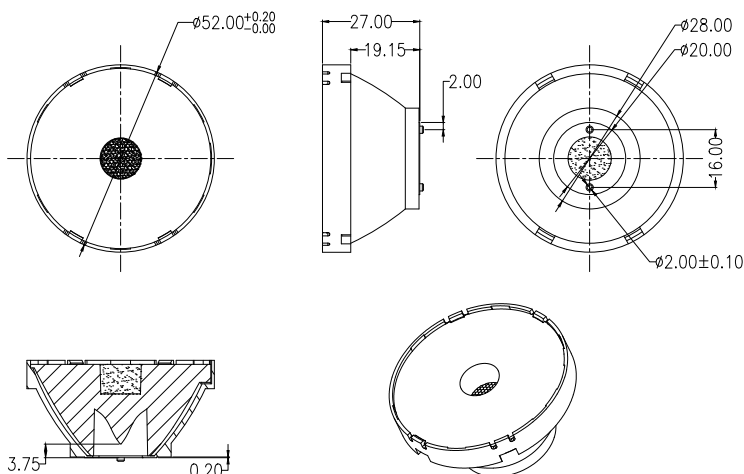
2. Lens dimensions



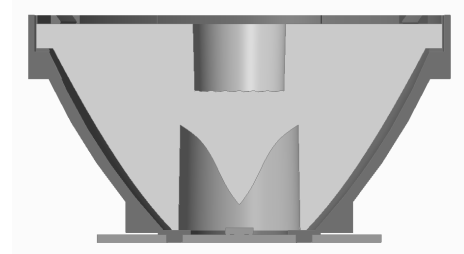
3. Lens + Leds + MCPCB assembly instruction



4. Lens assembly dimensions



5. View assembly lens with MCPCB:

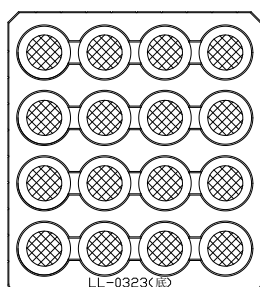


Holder part number : LL01CRRN05H2

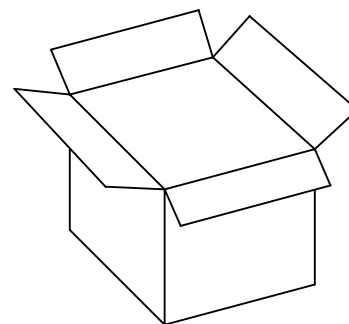
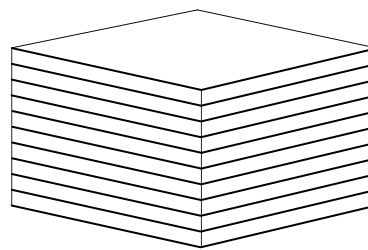
LL01ZZ-AHA05L06-M2

Package Specifications

Item	Quantity	Total	Size(L*W*H)	G.W
Plastic box	16 pcs/plastic box	16 pcs	32.3*29.6*3.5 cm	28g
Outer box	5 plastic box/Outer box	80 pcs	35*31*21 cm	



16 pcs/plastic box



80 pcs/Outer box



Note: